

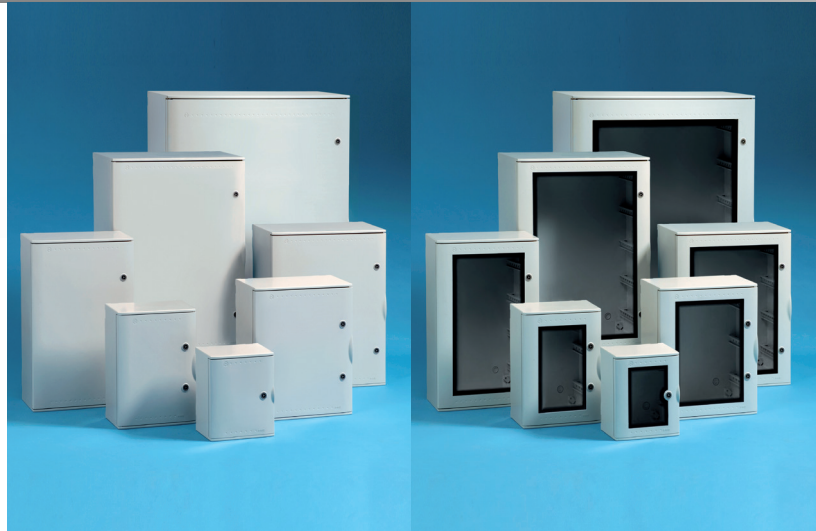
### IP65 FIBREGLASS ENCLOSURES

#### PRODUCT TYPE:

Insulating containers for electric equipment

#### APPLICATIONS:

Outdoor wall installations



#### DIMENSIONS AND POWER DISSIPATION:

|                                      | Product Name | External Dimensions in mm (LxAxP) | Number of modules/rows | Power dissipation (version with DIN rails + windowed panels) | Power dissipation (version with back plate) |
|--------------------------------------|--------------|-----------------------------------|------------------------|--|---|
| CIECO = (blank)<br>OBLÒ = (windowed) | VTR 01 CIECO | 300x265x165                       | Back plate only        | -  | 34 W  |
|                                      | VTR 01 OBLÒ  |                                   |                        |  |   |
|                                      | VTR 02 CIECO | 425x325x180                       | 36/3                   | 35 W   | 61 W  |
|                                      | VTR 02 OBLÒ  |                                   |                        |  |   |
|                                      | VTR 03 CIECO | 500x430x210                       | 54/3                   | 72 W   | 111 W                                       |
|                                      | VTR 03 OBLÒ  |                                   |                        |  |   |
|                                      | VTR 04 CIECO | 650x430x210                       | 72/4                   | 81 W   | 122 W                                       |
|                                      | VTR 04 OBLÒ  |                                   |                        |  |   |
|                                      | VTR 05 CIECO | 650x540x260                       | 96/4                   | 93 W   | 132 W                                       |
|                                      | VTR 05 OBLÒ  |                                   |                        |  |   |
|                                      | VTR 06 CIECO | 805x615x315                       | 140/5                  | 136 W  | 215 W                                       |
|                                      | VTR 06 OBLÒ  |                                   |                        |  |   |
|                                      | VTR 07 CIECO | 1060x810x335                      | 190/5                  | 232 W  | 342 W                                       |
|                                      | VTR 07 OBLÒ  |                                   |                        |  |   |

#### COLOUR RANGE:

Grey RAL 7035 – Tinted door

#### MATERIALS:

- **Casing:** Fibreglass (*Halogen Free*)
- **Blank door:** Fibreglass (*Halogen Free*)
- **Windowed door:** Fibreglass + Polycarbonate (*Halogen Free*)

#### DECLARATION OF CONFORMITY:

All Pedro range products come under the scope of the Low Voltage Directive 2006/95/CE and comply with all relevant essential requirements set in the Directive.

Compliance with the Directive is indicated by the **CE** marking and by all required symbols and markings affixed on the product, its packaging, in the assembly instructions and product catalogue, as well as by full product compliance with applicable standards.



**NORMATIVE REFERENCES:**

- **CEI 23-48:** "Boxes and enclosures for electrical accessories for household and similar fixed electrical installations – Part 1: General requirements"
- **CEI 23-49:** "Enclosures for stationary equipment for household and similar use – Part 2: Specific prescriptions for enclosures designed to contain protection devices and equipment which disperse considerable power during normal use"
- **IEC 60670-24:** "Boxes and enclosures for electrical accessories for household and similar fixed electrical installations – Part 24: Particular requirements for enclosures for housing protective devices and similar power consuming devices"
- **EN 62208:** "Empty enclosures for low-voltage switchgear and controlgear assemblies. General requirements"

**Degree of protection provided by Enclosures** as per EN 60529 standard "Degrees of protection provided by enclosures (IP Code)": IP65

**Resistance to impact** as per EN 62262 Standard "Degrees of protection provided by enclosures for electrical equipment against external mechanical impacts (IK Code)": IK10 (20 Joules)

**Resistance to hot-wire based test** as per EN 60695-2-11 Standard "Fire hazard testing – Part 2-11: Glowing/hot-wire based test methods – Glow-wire flammability test method for end-products":

- Blank doors : passed the 960 °C test
- Windowed doors: passed the 650 °C test

**Electric insulation** (EN 61439-1) : products feature full insulation components for protection against indirect contact (Class II). However, in order to ensure protection, they must be correctly installed according to the instructions provided by the manufacturer and using the appropriate accessories (e.g. screw caps, clamps).

**MINIMUM INSTALLATION AND SERVICE TEMPERATURE:**

-25 °C

**MAXIMUM SERVICE TEMPERATURE:**

+60 °C

**ELECTRICAL INSULATING PROPERTIES:**

yes (rated voltage up to 1000 V AC)

**RESISTANCE TO CHEMICAL AGENTS:**

|  | Saline    | Acids                           |                                 | Bases                           |                                 | Solvents                        |                                 |           |                                 | Mineral Oil                     |
|--|-----------|---------------------------------|---------------------------------|---------------------------------|---------------------------------|---------------------------------|---------------------------------|-----------|---------------------------------|---------------------------------|
|  |           | 100%                            | Thinned                         | 100%                            | Thinned                         | Hexane                          | Benzoic acid                    | Acetone   | Ethyl-alcohol                   |                                 |
|  | Resistant | Resistant in certain conditions | Resistant in certain conditions | Resistant in certain conditions | Resistant in certain conditions | Resistant in certain conditions | Resistant in certain conditions | Resistant | Resistant in certain conditions | Resistant in certain conditions |

**UV RESISTANCE:**

yes



**MAXIMUM ADMISSIBLE  
LOAD AS PER EN 62208  
STANDARDS:**

|                                      | Product Name                | Inner door / Door | Back plate | Single DIN rail | Blank door | Maximum load |
|--------------------------------------|-----------------------------|-------------------|------------|-----------------|------------|--------------|
| (in Kg)                              | VTR 01 CIECO<br>VTR 01 OBLÒ | 1,0               | 5,5        | -               | -          | 6,5          |
| CIECO = (blank)<br>OBLÒ = (windowed) | VTR 02 CIECO<br>VTR 02 OBLÒ | 1,4               | 9,0        | 2,7             | 1,0        | 10,0         |
|                                      | VTR 03 CIECO<br>VTR 03 OBLÒ | 2,7               | 15,0       | 4,0             | 1,5        | 18,0         |
|                                      | VTR 04 CIECO<br>VTR 04 OBLÒ | 3,6               | 18,0       | 4,0             | 1,5        | 22,0         |
|                                      | VTR 05 CIECO<br>VTR 05 OBLÒ | 4,5               | 25,0       | 5,4             | 2,0        | 30,0         |
|                                      | VTR 06 CIECO<br>VTR 06 OBLÒ | 6,7               | 36,0       | 6,3             | 2,5        | 43,0         |
|                                      | VTR 07 CIECO<br>VTR 07 OBLÒ | 12,0              | 65,0       | 10              | 5,0        | 77,0         |

**OTHER FEATURES:**

- Modular frame with adjustable depth
- DIN rails with adjustable depth
- Removable panels
- Snap on assembly with ¼ turn screws
- High aesthetic design

**MARKINGS  
AND CERTIFICATIONS:**



**CONFORMITY WITH  
2011/65/CE (ROHS)  
DIRECTIVE:**

yes

