

תקן: 3131  
שם: PVC  
מס' זיהוי: 11631304-3  
ישראלוקס בע"מ



**Test Report**

No. SH0025127/CHEM

Date: Mar. 2, 2009

Page 1 of 4

The following sample(s) was/were submitted and identified by/on behalf of the client as:

Sample Name : SLFS  
SGS Ref No. : 11631304-3  
Part No : SLFS

Sample Receiving Date : Feb. 24, 2009  
Testing Period : Feb. 24 - 27, 2009

Test Requested : In accordance with the RoHS Directive 2002/95/EC, and its amendment directives.

Test Method : With reference to IEC 62321:2008  
(1) Determination of Cadmium by ICP.  
(2) Determination of Lead by ICP.  
(3) Determination of Mercury by ICP.  
(4) Determination of Hexavalent Chromium by Colorimetric Method.  
(5) Determination of PBBs and PBDEs by GC/MS.

Test Results : Please refer to next pages

Conclusion : Based on the performed tests on submitted samples, the results comply with the RoHS Directive 2002/95/EC and its subsequent amendments.

Signed for and on behalf of  
SGS-CSTO Chemical Laboratory

*Sandy Hsu*

Sandy Hsu  
Lab Manager

The information provided by this document is for reference only. It does not constitute a warranty or a guarantee of accuracy, reliability, or completeness. It is the responsibility of the client to ensure that the information provided is accurate and reliable. The client is responsible for the accuracy and reliability of the information provided. The client is responsible for the accuracy and reliability of the information provided. The client is responsible for the accuracy and reliability of the information provided.





ישראל וקסט בע"מ

Test Report

No. S10026127/CHEM

Date: Mar. 2, 2009

Page 2 of 4

Test results by chemical method (Unit: mg/kg)

Test Item(s)	Method (refer to)	1	MDL	RoHS Limit
Cadmium (Cd)	(1)	ND	2	100
Lead (Pb)	(2)	ND	2	1000
Mercury (Hg)	(3)	ND	2	1000
Hexavalent Chromium (CrVI) by alkaline extraction	(4)	ND	2	1000
Sum of PBBs		ND	-	1000
Monobromobiphenyl		ND	5	-
Dibromobiphenyl		ND	5	-
Tribromobiphenyl		ND	5	-
Tetrabromobiphenyl		ND	5	-
Pentabromobiphenyl		ND	5	-
Hexabromobiphenyl		ND	5	-
Heptabromobiphenyl		ND	5	-
Octabromobiphenyl		ND	5	-
Nonabromobiphenyl		ND	5	-
Decabromobiphenyl		ND	5	-
Sum of PBDEs	(5)	ND	5	-
Monobromodiphenyl ether		ND	5	1000
Dibromodiphenyl ether		ND	5	-
Tri bromodiphenyl ether		ND	5	-
Tetrabromodiphenyl ether		ND	5	-
Pentabromodiphenyl ether		ND	5	-
Hexabromodiphenyl ether		ND	5	-
Heptabromodiphenyl ether		ND	5	-
Octabromodiphenyl ether		ND	5	-
Nonabromodiphenyl ether		ND	5	-
Decabromodiphenyl ether #6		ND	5	-

Test Part Description:  
1. Gray plastic wire part

Note:

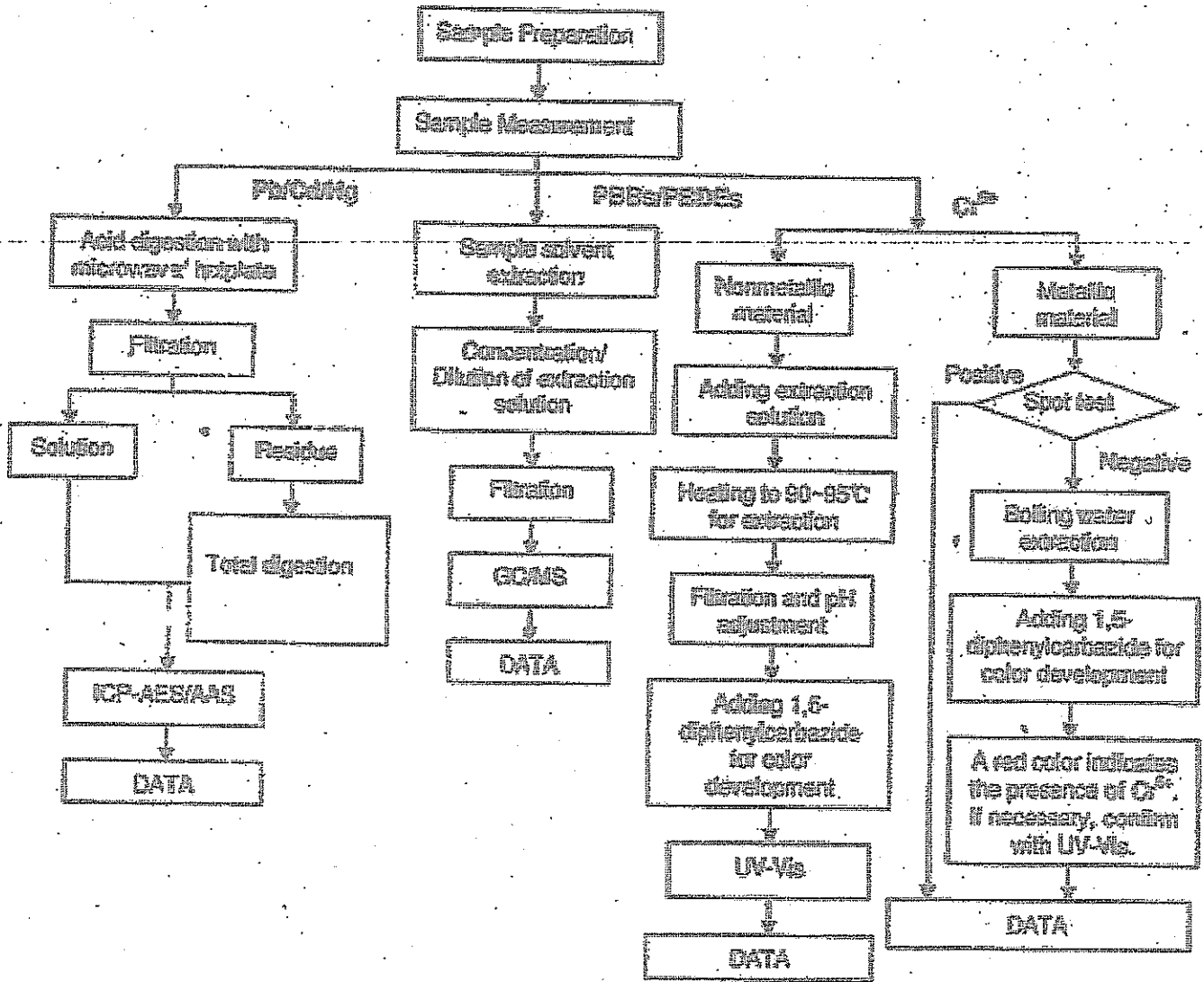
- (1) mg/kg = ppm
- (2) ND = Not Detected
- (3) MDL = Method Detection Limit
- (4) # - The exemption of DecaBDE in polymeric application according 2005/71/EC was overruled by the European Court of Justice by its decision of 01.04.2008. Subsequently DecaBDE is included in the sum of PBDE after 01.07.2009.
- (5) # = Not Regulated
- (6) The maximum permissible limit is quoted from the document 2006/618/EC amending RoHS directive 2002/95/EC

This document is the property of SGS and is to be used only for the purpose for which it was issued. It is not to be distributed outside the company. The user of this document is responsible for its content and accuracy. The user of this document is also responsible for its use in accordance with the applicable laws and regulations. The user of this document is also responsible for its use in accordance with the applicable laws and regulations. The user of this document is also responsible for its use in accordance with the applicable laws and regulations.

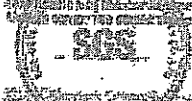


### ATTACHMENTS

- 1) Name of the person who made measurement: Jeff Zhang/Chaven Lin/Frank Fang/Elin Lin
- 2) Name of the person in charge of measurement: Tony Wang/Phoenix Shou
- 3) These samples were dissolved totally by pre-conditioning method according to below flow chart. ( $Cr^{6+}$  and PbBa/PbEa test method excluded)



This document is issued by the Company under the Company's name and the Company's logo. It is a confidential document and its content is not to be disclosed to any third party without the written consent of the Company. The Company is not responsible for any loss or damage resulting from the use of this document. The Company is not responsible for any loss or damage resulting from the use of this document. The Company is not responsible for any loss or damage resulting from the use of this document.





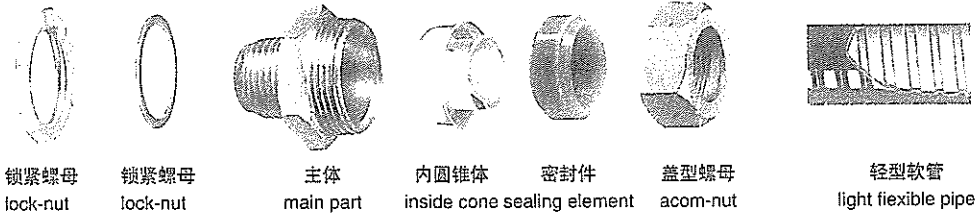
施乐软管

SHILE RUANGUAN

180° 端接式管接头 (SLDJ-1 型)

180° END JOINT CONNECTOR (SLDJ-1 TYPE)

*Handwritten notes:*  
 1. 35mm 2015.7.11  
 2. 2015.7.11  
 3. 2015.7.11



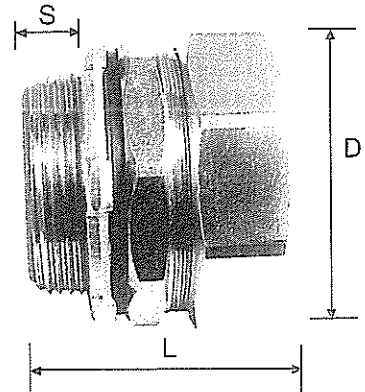
锁紧螺母 lock-nut    锁紧螺母 lock-nut    主体 main part    内圆锥体 inside cone    密封件 sealing element    盖型螺母 acorn-nut    轻型软管 light flexible pipe

SLDJ-1 型端接式管接头采用锌合金材料压铸而成, 表面镀锌, 处理产品结构紧密, 无气孔, 强度高。与软管连接可靠, 外表美观。

- 此接头为端接式用来将软管连接于箱体上的直线连接件。
- 推荐使用 A 型、D 型接头。

SLDJ-1 type heading connector is die-casted of zine alloy, with zine planted on its surface. This product has inseparable constitution, high intensity, elegant appearance, no blowholes, can be conlidemly connectted with flexible conduits.

- This heading joint connector can used to connect the flexible conduits with the linear adapting piece.
- Recommend you to use type A.D connector.



型号规格 SPECIFICATION	英制尺寸 ENGLISH SIZE	公制螺纹 METRIC SCREW THREAD			英制螺纹 INCH SCREW THREAD	薄钢螺纹 STEEL SHEET SCREW THREAD		厚钢螺纹 PLATE SHEET SCREW THREAD		S	D	L
		A	B	C		D	E	F				
8		M16 × 1.5		M16 × 1	G3/8							
10	1/4	M16 × 1.5			G3/8	12	1/2			8	26.6	30
12	3/8	M20 × 1.5	M18 × 1.5	M22 × 1.5	G1/2	15	5/8	10	G3/8	10	30.0	32
15	1/2	M24 × 1.5	M27 × 2		G3/4	20	3/4	15	G1/2	12	33.6	34
20	3/4	M30 × 2	M24 × 1.5	M33 × 2	G1	25	1	20	G3/4	13	40.0	37
25	1	M36 × 2	M33 × 2		G1 1/4	32	1 1/4	25	G1	14	51.5	44
32	1 1/4	M48 × 2	M42 × 2		G1 1/2	40	1 1/2	32	G1 1/4	17	63.0	52
38	1 1/2	M60 × 2	M48 × 2		G2	50	2	40	G1 1/2	19	73	55
51	2	M75 × 2	M64 × 2	M72 × 2	G2 1/2	70	2 1/2	50	G2	23	90	65
64	2 1/2	M90 × 2	M76 × 2	M85 × 3	G3	80	3	70	G2 1/2	25	107	69
75	3	M90 × 2	M85 × 3		G4			80	G3	25	122	69
100	4	M108 × 2			G5				G4	30	160	83
125	5	M140 × 2			G6				G5	30		85
150	6	M165 × 2							G6	30		85



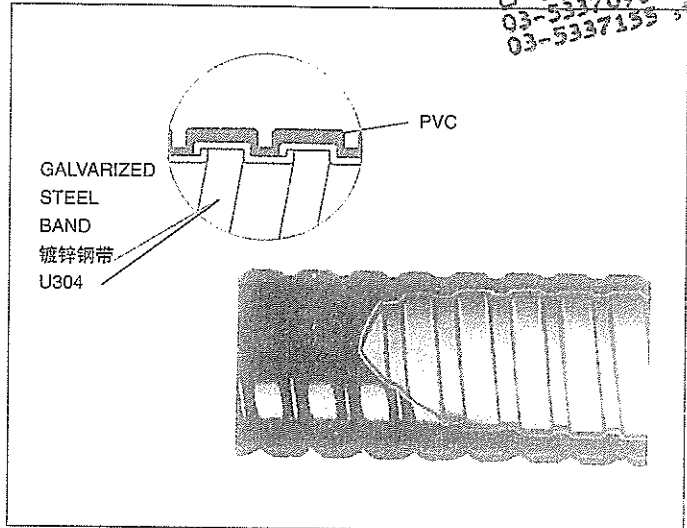
משרד אלקטרה  
מחלקת מכירת  
03-5227090  
03-5337155

防水型金属软管波浪式 (SLFS 型)

WATER PROOF TYPE METAL HOSE WAVE PIPE TYPE (SLFS TYPE)

SLFS型轻型软管是在SLDX型的管芯上, 沿着管壁芯的凹凸面贴紧, 包覆一层电缆用聚氯乙烯材料, 由于其重量轻, 柔性优良, 与附件的连接强度, 电器性能及耐油、防溅水等优点, 应用于任何狭小空间之电气配管区域。

- 为使用户在寒冷地区使用, 外包层可改用冲击脆化温度为-45℃的聚氯乙烯, 请用户在订货时注明。
- 为使用户在特殊场合, 提高阻燃要求, 可选用氧指数 > 30 聚氯乙烯, 请用户在订货时注明生产。
- 请配用SLDJ、SLZJ、SLZG型接头附件。



SLFS model light type hose is to cover a lay of PVC for cable on SLDX model pipe core and tightly stick them along concave and convex face of the wall core.

It applies to any narrow space of electric distribution pipe area for its advantages of light weight, good flexibility, connection strength to accessories, electric performance, oil resistance and water splash proof, etc.

- To be used in frigid area, the outer cover can be changed into PVC with shock brittle temperature of -45 Celsius degrees. Please give clear indication when make an order.
- To improve the fire resistance when used in special situation, you may choose PVC with oxygen-used index > 30. Please give clear indication when make an order.
- Please use matched SLDJ SLZJ, SLZG.

公称内径 mm NOMINAL INSIDE DIAMETER	英制尺寸 ENGLISH SIZE	最小内径 mm MINIMUM INSIDE DIAMETER	外径 mm OUTSIDE DIAMETER	单件数量 m SINGLE NUMBER	重量 kg/m WEIGHT	弯曲半径 mm BENDING DIAMETER	适配钢管 SPLINE FIT STEEL PIPE		
							薄钢 THIN STEEL	厚钢 THICK STEEL	
10	1/4	9.70	14.3	100	0.17	40	#12	1/2"	
12	3/8	11.65	16.3	100	0.20	50	#15	5/8"	#10 3/8"
15	1/2	14.65	19.8	100	0.27	60	#20	3/4"	#15 1/2"
20	3/4	19.60	25.3	50	0.40	80	#25	1"	#20 3/4"
25	1	24.50	31.3	50	0.50	140	#32	1 1/4"	#25 1"
32	1 1/4	31.50	39.0	25	0.70	200	#40	1 1/2"	#32 1 1/4"
38	1 1/2	37.40	46.2	25	0.95	280	#50	2"	#40 1 1/2"
51	2	50.00	59.2	20	1.35	360	#70	2 1/2"	#50 2"
64	2 1/2	62.50	74.0	20	2.00	480	#80	3"	#70 2 1/2"
75	3	73.00	85.0	20	2.20	560			#80 3"
100	4	97.00	110.3	20	2.90	640			#100 4"
125	5	122.00	135.5	10	3.50	720			#125 5"
150	6	146.50	161.0	10	4.80	800			#150 6"